



# Coordinated Entry System

Riverside County Continuum of Care  
December 2017



# Introduction

- Margaret McFaddin
- TDA Consulting, Inc.
- [mmcfaddin@tdainc.org](mailto:mmcfaddin@tdainc.org)
  
- 803-603-2133



# Coordinated Entry System

- Process to identify and prioritize persons for access to housing and services based on severity of need and vulnerability
- Increase efficiency of local crisis response system
- Improve fairness and ease of access to resources



# Applicability and Deadlines

- Once established, all CoC/ESG program recipients and subrecipients must begin using CE process
  - Victim service providers may use a comparable system
  - ESG victim service providers allowed, but not required, to use CE
- Establish or update CE process by January 23, 2018



# My Role

- HUD Technical Assistance Consultant
  - Facilitate discussion and planning toward implementation of Coordinated Entry System
  - Review and recommend written policies and procedures
  - Ensure compliance with HUD rules and regulations



# CES Policies and Procedures

A. Governance

B. Access

C. Assessment

D. Prioritization

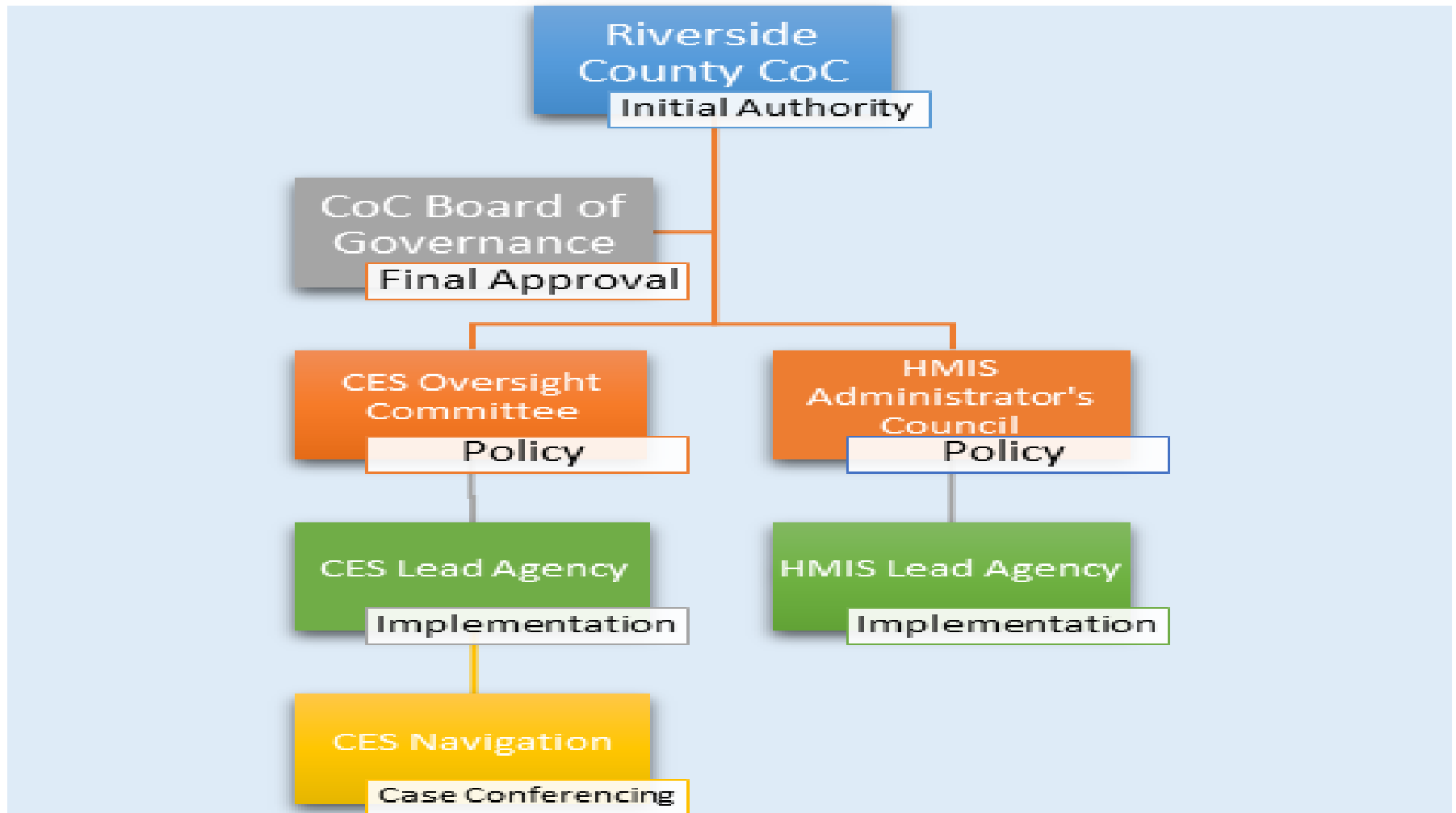
E. Referral

F. Data Management

G. Evaluation



# CES Governance





# ACCESS

- No Wrong Door Approach
- Agencies Providing Housing and Services
- Outreach Workers and Law Enforcement
- HomeConnect 800 Number
- Homeless Prevention/ Shelter Diversion





# ASSESSMENT

- Common Assessment Tool – VI-SPDAT
- CES Lead Agency trains staff to administer assessments
- Navigators – Intensive support, case management and engagement in development of housing plan



# PRIORITIZATION

- Based on length of time homeless and severity of need
- Initial determination based on length of time homeless and score on VI-SPDAT
- Prioritization Request Form Process



# REFERRAL

- All CoC-funded, ESG-funded, and Riverside County-funded housing and service providers
- Appeal Process



# DATA MANAGEMENT

- Part of HMIS
- Complies with HUD and CoC data security, privacy and confidentiality policies
- Complies with data collection and data sharing policies



# EVALUATION

- Annual Survey
- Focus Groups and Individual Interviews
- System Performance Measures
- Periodic Reporting by CES Lead Agency



# APPENDICES

- CES Access Sites
- Outreach Worker/ Navigator Directory
- Homeless Prevention Resources Directory
- Housing Providers Listing
- Screening and Assessment Tools
- By Name List
- CES Participating Agency Agreement
- Various Forms