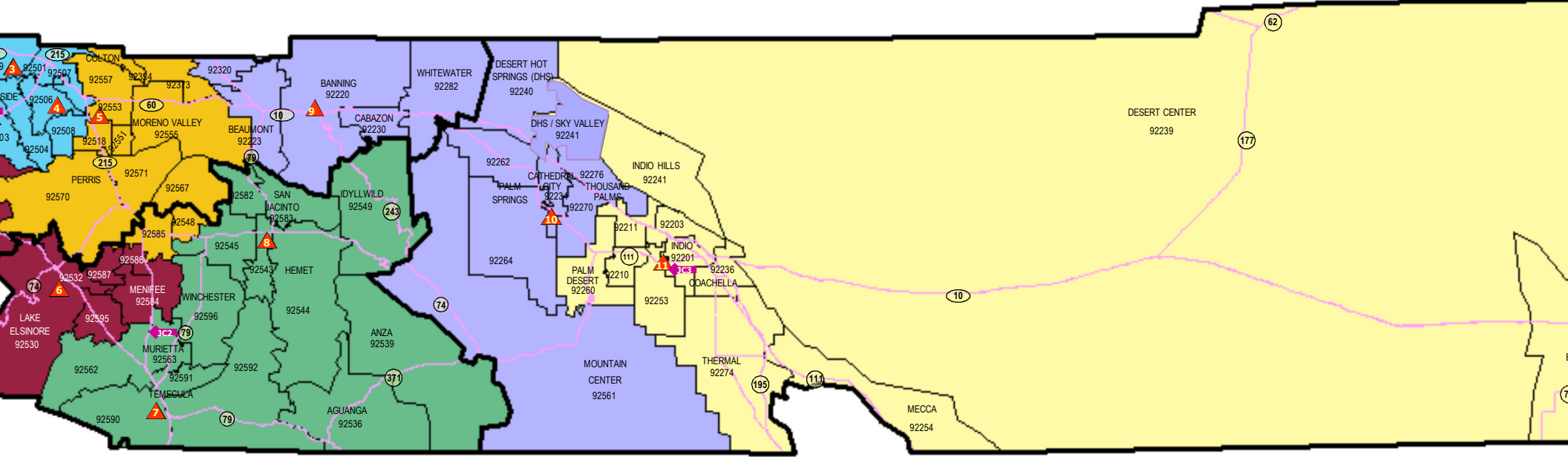


# Riverside County DPSS Children's Services Division

## SERVICE REGIONS & JUVENILE COURT BOUNDARIES

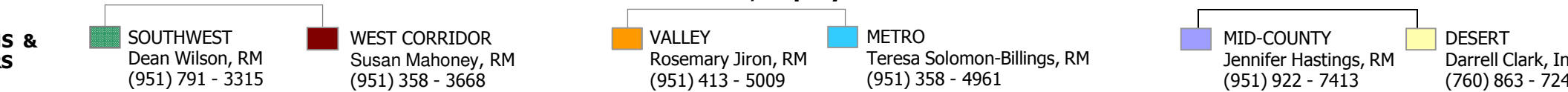
Data Analyst



### Jennie Pettet, Deputy Director

### Laurel Brown, Deputy Director

### Laurie Fineman, Deputy Director



- Administration 4060 County Circle Drive, Riverside, CA 92503
- Kidd Street Office 10281 Kidd Street, Riverside, CA 92503
- La Sierra Office 11070 Magnolia Ave. Suite A, Riverside, CA 92503
- Corona Police Station 152 E. 6th Street, Corona, CA 92879
- Jurupa Office 5961 Mission Blvd., Riverside, CA, 92509
- Metro Office 3610 Central Avenue, Riverside, CA 92506
- Moreno Valley Office 23119 Cottonwood Avenue, Bldg. A, Moreno Valley, CA 92553
- Central Intake (Hotline) 23119 Cottonwood Avenue, Bldg. B, Moreno Valley, CA 92553

- 6. Lake Elsinore Office
- 7. Temecula Office
- 8. Hemet Office
- 9. Banning Office
- 10. Cathedral City Office
- 11. Indio Office
- 12. Blythe Office

- 1400 Minthorn Street, 2<sup>nd</sup> Floor, Lake Elsinore, CA 92530
- 27464 Commerce Center Drive, Temecula, CA 92590
- 547 North San Jacinto, Hemet, CA 92543
- 901 E. Ramsey, Banning, CA, 92220
- 68625 Perez Road, Cathedral City, CA 92234
- 48113 Jackson Street, Indio, CA 92201
- 1267 W. Hobson Way, Blythe, CA 92225

**Juvenile Courts & Boundaries:** **JC1** Riverside Juvenile Court - 9991 County Farm Road Riverside, CA 92503\*

**JC2** Southwest Justice Center - 30755-D Auld Road Murrieta, CA 92563\*

**JC3** Indio Juvenile Court - 48113 Jackson St Indio, CA 92201